

Technical Notification

Document number: 95-125663

Date: June – 2007

New software ver. 2.03 for EXPLORER® 300/500/527

Subject:

Please be informed that a new software version 2.03 for the EXPLORER 300, EXPLORER 500 and EXPLORER 527 has been released.

Priority:

- **MEDIUM:** It is recommended to apply this change / initiative to all units in stock. For units sold it is recommended to apply this change / initiative next time the system(s) is inspected.

Changes from ver. 2.01 to 2.03:

New features – see detailed description from page 4 to 9

- Home has been renamed to Dashboard.
- Support for 5 languages (English, German, French, Spanish & Russian).
- Enable/Disable of automatic Standard Data activation.
- Administrator can set user permissions/restrictions from web interface.
- 'Check for available updates'/'Download software' functionality on Upload page.
- New entry in web interface to comply with French Bluetooth regulations.
- Additional network status information in diagnostic report.
- Support for discrete SIMs related to the BGAN RAN 3 network upgrade.

Bug fixes –

- ISDN UDI call could causes terminal to reboot.
- Clicking on BT icon in the web interface could cause terminal to reboot.
- Unicode character in SMS more than 68 characters would cause the terminal to lock-up.
- Incremental memory usage in browser when using the web interface.
- 1970 in call log and alarm list changed to "Time unavailable".

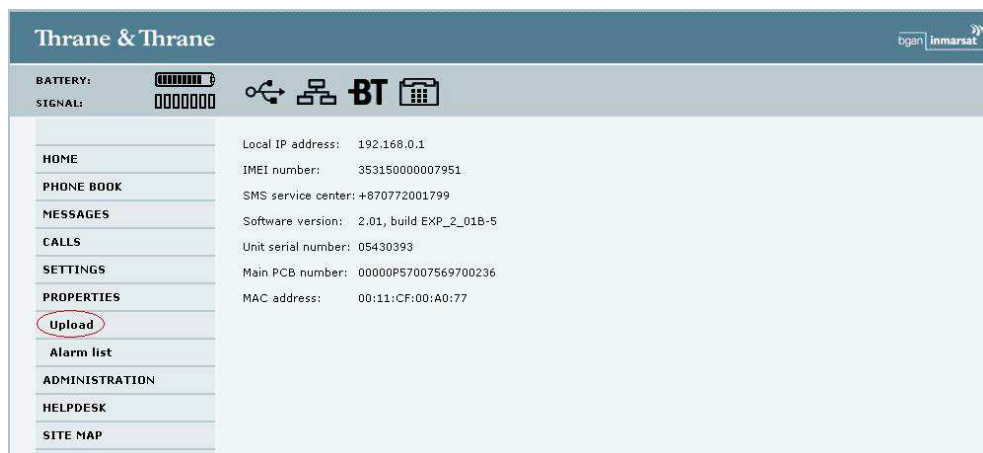
Continued...

Action:

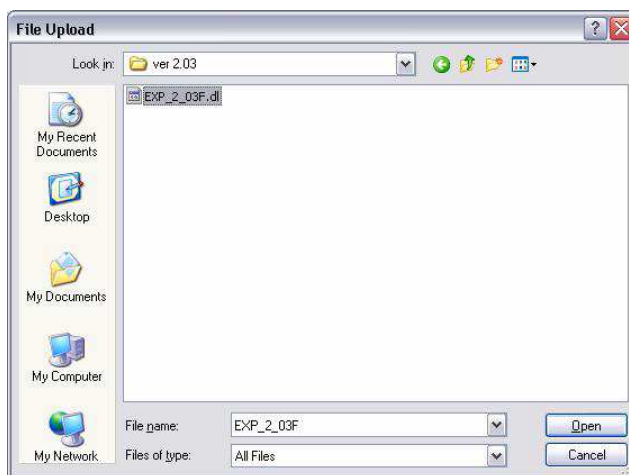
Download the file 'EXPLORER_300_500_V2.03.zip' located at Thrane & Thrane extranet <http://extranet.thrane.com/Support.aspx> or at the Thrane & Thrane A/S eSupport <http://esupport.thrane.com> and save / extract it on your hard disk.

The following will describe the procedure for installing Ver. 2.03 on EXPLORER 300/500/527.

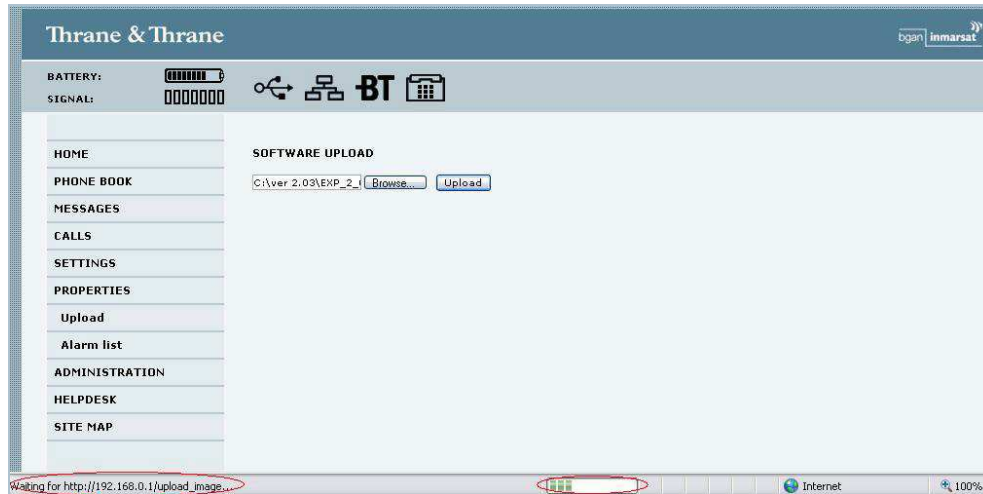
1. Make sure the EXPLORER terminal is switched on and connect the Ethernet cable to your PC.
2. Open your web-browser and open the Web Interface of the EXPLORER at address <http://192.168.0.1/>
3. Select 'Properties' and 'Upload'



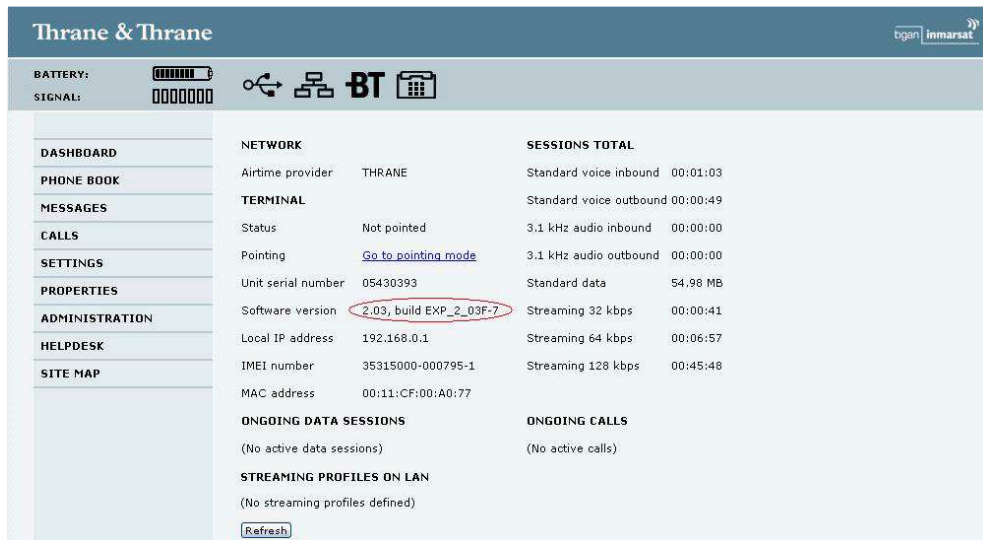
4. Select 'Browse' and locate the file 'EXP_2_03F.dl' and chose 'Open'.



5. Choose 'Upload' and verify that the upload is in progress like below (status bar enabled in browser)



6. Select again the address <http://192.168.0.1/> and verify the software version at 'Properties'.

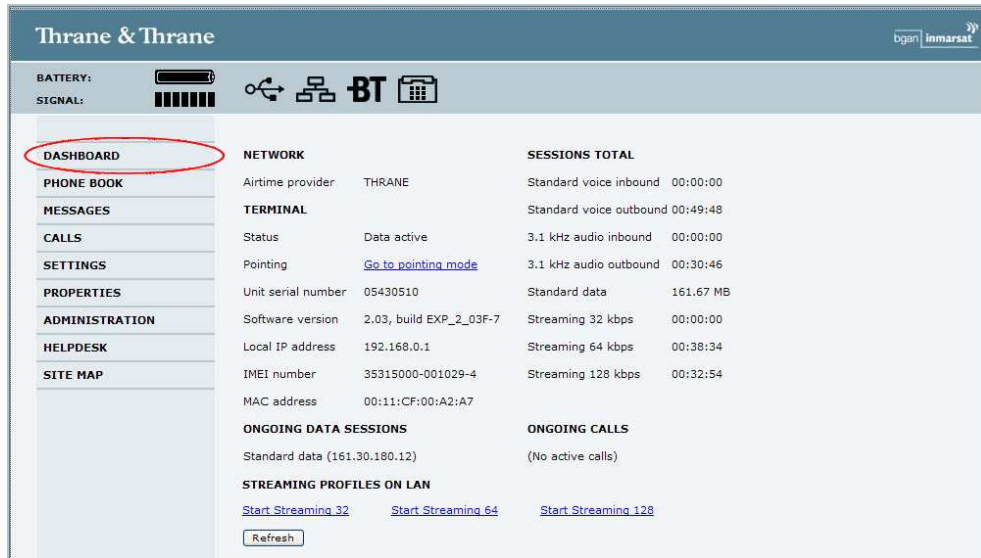


End of updating procedure.

Continued...

Detailed description of each new feature:

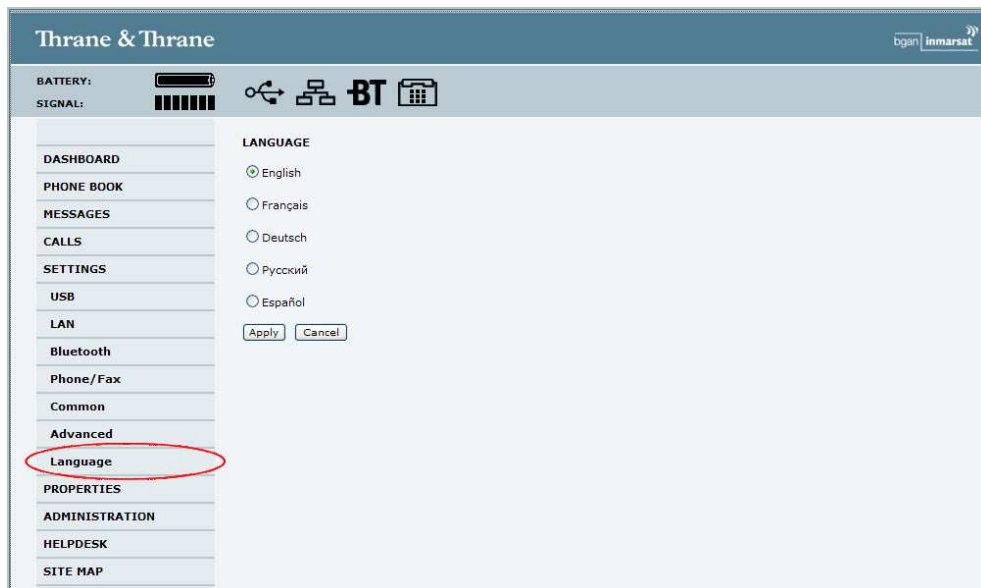
1. Home has been renamed to Dashboard.



2. The web interface and terminal display now support five languages (English, French, German, Russian and Spanish).

English is the default language.

Select SETTINGS > Language. Use the radio buttons to select language and click on Apply.



3. Enable/Disable of automatic Standard Data activation.

Default setting is Enabled i.e. the terminal will automatically start a Standard Data connection when for instance a laptop is connected to the LAN interface.

The automatic activation should be disabled if using the Inmarsat Launchpad.

When Automatic activation is disabled and the new setting is applied, Standard Data must be manually started and stopped from either the web interface or the terminal display/keypad. Please refer to below picture.

The screenshot shows the Thrane & Thrane web interface with the following sections and settings:

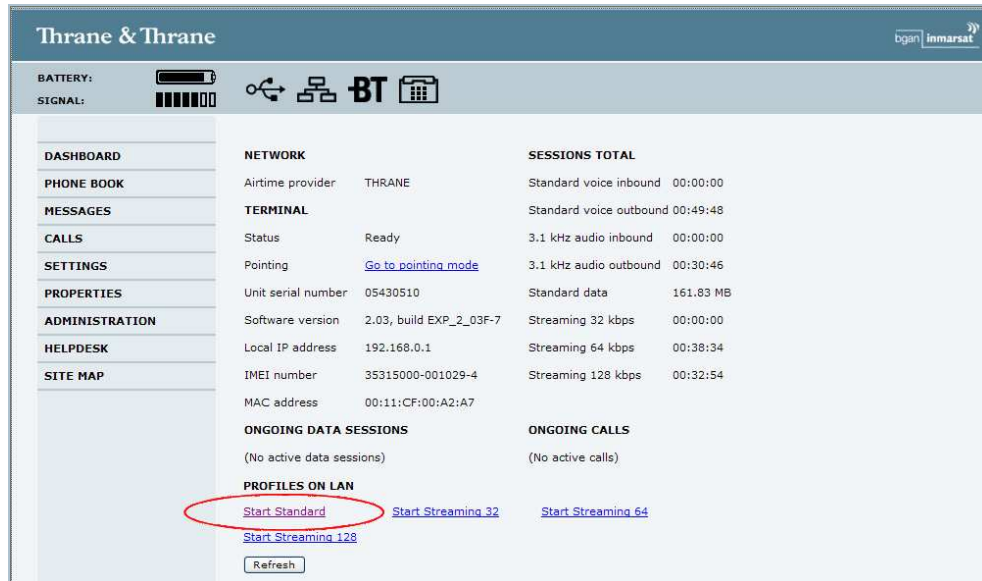
- INTERFACE STATUS:** LAN interface Enabled Disabled
- NAT/DHCP:** NAT mode Router mode Modem mode; DHCP status Enabled Disabled
- TCP/IP:** Local IP address: 192.168.0.1; Netmask: 255.255.255.0; Dynamic IP address; Static IP address; IP Header compression Enabled Disabled
- APN:** SIM default; Network assigned; User defined (BGAN.INMARSAT.COM)
- PROFILES:** **Automatic activation** Enabled Disabled (circled in red); Primary: Standard; Secondary: Standard
- PROFILE CIDS:**

Profile	Cid
Standard	1
Streaming 32	3
Streaming 64	4
Streaming 128	5

Buttons: Apply, Cancel, Activate

Footnote: Changes to profiles on the LAN interface applied above or on Administration pages will only take effect after re-activating already activated profiles

To manually start and stop a Standard Data connection from the web interface use the link found on the Dashboard as shown on next page.



From the terminal display/keypad the Standard Data connection can also be started and stopped manually by following below instruction:

Press the arrow down ▼ key once to enter the terminal menus.

Press the arrow down ▼ key until the cursor highlights CONNECT. Then press the OK ► key.

Select STANDARD and press the OK ► key.

Select START and press the OK ► key.

Press the OK ► key to confirm the activation of the Standard Data connection.

Press the C ◀ key until the status window is displayed.



When starting a Streaming Data that is configured as a secondary connection then the primary Standard Data connection will automatically be initiated.

4. Administrator can set user permissions/restrictions from the web interface.

- ▶ Protect the terminal from unauthorized firmware updates.
- ▶ Protect the entries in the phone book.
- ▶ Locking the interfaces, Phone/Fax, USB, LAN and Bluetooth interface.
As an example the Bluetooth interface can be disabled and locked in the menu SETTINGS > Bluetooth. Disable the interface and apply the new setting.

Go to ADMINISTRATION and logon (The default user name is *admin* and the default password is *1234*). To lock the Bluetooth interface change the Bluetooth setting to “no” and click apply.

Log off as administrator.

It is recommended to change the user name and password.

- ▶ Lock the supplementary service settings.
- ▶ Lock the common settings.
- ▶ Lock the general settings.
- ▶ Blocking the use of AT commands via USB, LAN and Bluetooth is now possible, thereby not allowing a telnet session to be established as with LaunchPad and Terminal Programs. Click *no* in the appropriate interface radio buttons in situations where for instance unauthorized firmware updates must be blocked.

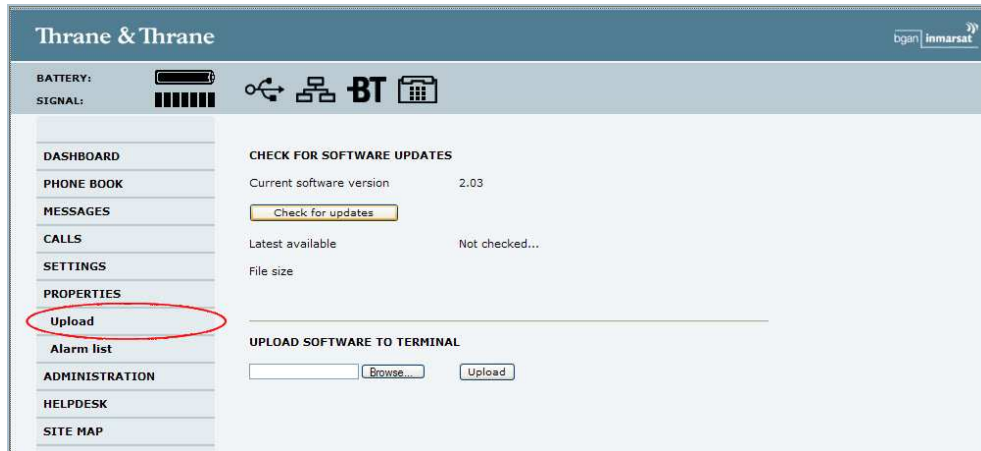
Remember to log off as Administrator or switch the terminal off.

The screenshot shows the Thrane & Thrane web interface. The top navigation bar includes the company logo and status indicators for BATTERY and SIGNAL. A left sidebar contains a menu with items like DASHBOARD, PHONE BOOK, MESSAGES, CALLS, SETTINGS, PROPERTIES, ADMINISTRATION, Call charges, Log handling, Profiles, Traffic flow templates, SIM Lock, User permissions (circled in red), HELPDESK, and SITE MAP. The main content area is divided into two sections: 'ALLOW USERS TO:' and 'ALLOW AT COMMANDS ON:'. The 'ALLOW USERS TO:' section lists various actions with radio buttons for 'yes' and 'no'. The 'ALLOW AT COMMANDS ON:' section lists interface types with radio buttons for 'yes' and 'no'. A red warning message states: 'Changes to AT command permissions require rebooting to take effect'. At the bottom, there are 'Apply' and 'Cancel' buttons.

Section	Action	yes	no
ALLOW USERS TO:	Upload software	<input checked="" type="radio"/>	<input type="radio"/>
	Edit phone book	<input checked="" type="radio"/>	<input type="radio"/>
	Change phone settings	<input checked="" type="radio"/>	<input type="radio"/>
	Change USB settings	<input checked="" type="radio"/>	<input type="radio"/>
	Change LAN settings	<input checked="" type="radio"/>	<input type="radio"/>
	Change Bluetooth settings	<input checked="" type="radio"/>	<input type="radio"/>
ALLOW AT COMMANDS ON:	Change supplementary services	<input checked="" type="radio"/>	<input type="radio"/>
	Change common settings	<input checked="" type="radio"/>	<input type="radio"/>
	Change general settings	<input checked="" type="radio"/>	<input type="radio"/>
	USB interface	<input checked="" type="radio"/>	<input type="radio"/>
LAN interface	<input checked="" type="radio"/>	<input type="radio"/>	
Bluetooth interface	<input checked="" type="radio"/>	<input type="radio"/>	

5. 'Check for updates', 'Download software'.

If the latest terminal software is already available locally, then click on “browse” to locate the file. Click on the Upload button and wait for the image to be transferred to the flash memory. The terminal will automatically reboot after a successful update.



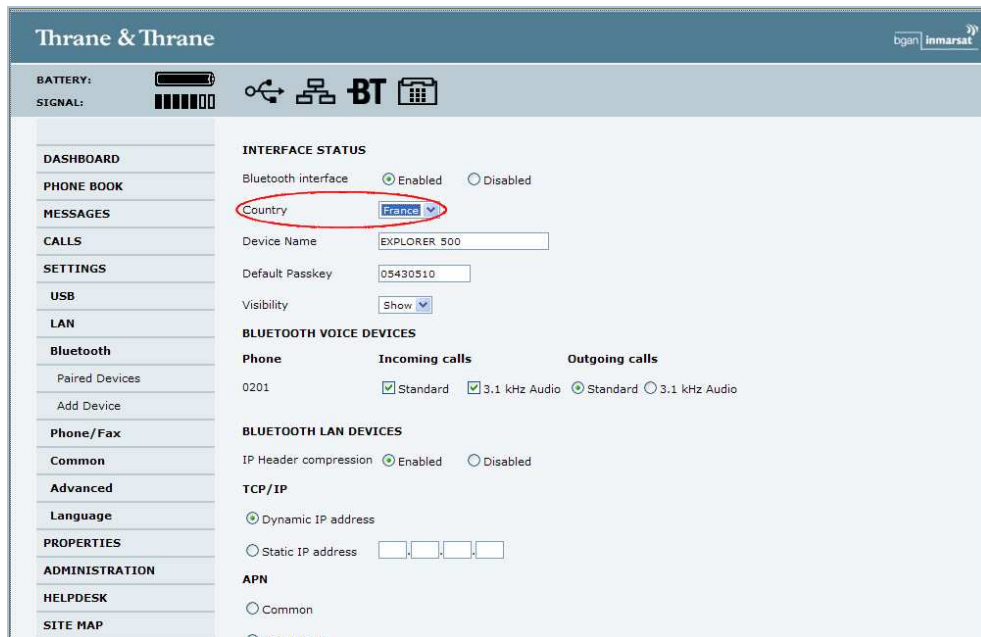
If not stored locally it will be possible to check for updates over the air i.e. next software release will be available directly from the web interface.

Remember that the file will be transferred over the satellite link (File size will be shown before it is possible to download the file).

6. New entry in web interface to comply with French Bluetooth regulations.

Set to France when using the Bluetooth interface in France.

The Bluetooth chip will reboot when applying the new setting and all active Bluetooth connections would have to be re-established.



Thrane & Thrane
After Sales Service

Author:	Date:	Checked:	Date:	Approved:	Date:
JDO	08-06-2007	CK	18-06-2007	CK	18-06-2007